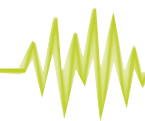


# RadioMan Music Scheduler

Schedule

## Automating your music selection



JUTEL RadioMan™

### Unique highlights

- Cost effective music management tool
- Easy to adopt and use
- Integral part of the RadioMan product family
- Extended version for multi-channel scheduling

### Power of integration

RadioMan Music Scheduler is not only fast to learn and easy to use, it is also flexible. It provides an extensive set of tools for automated music selection, based on configurable music selection rules and music classification. The Scheduler runs the selection process together with RadioMan Playlist Design application, and the resulting set of music is placed directly to a RadioMan playlist. RadioMan Music Scheduler is a ideal tool for various types of stations from linear programming to format radios.

### Right music for you

There can be an unlimited number of music clocks defined in the system. A music clock is a template for selected music, each track having an individual set of selection rules based on any classification and style selection in the database. Music clocks are built with the RadioMan Music Clock Designer module and the length of a clock can be anything from one song to 24 hours.

Artist groupings ensure that incompatible artists will not appear within the same selection set.

### One server process serves all workstations

RadioMan Music Scheduling Engine itself is a server-side application, which processes the music selection requests received from RadioMan Playlist Design.

The selection is done considering the music category specific selection rules that have been configured to the engine to maintain the suitable separation between the tracks.

### Assists manual selection

The user can override any selection and the scheduler will automatically generate alternatives based on the same criteria and rules for manual choice. It gives an automatic warning if a manual choice differs from the music clock rules. The user can also browse the rotation history of any song with a mouse click.

### Easy to maintain

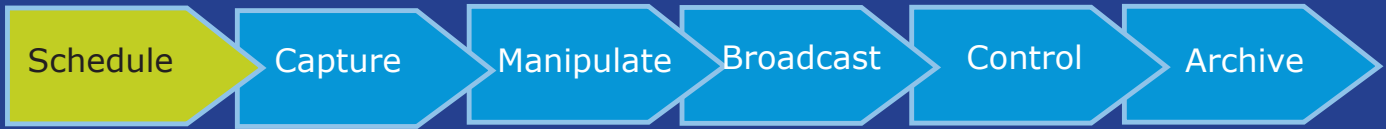
Automatic category change makes it easy to reclassify music tracks after a user-defined period of time.

Category	Mood	Energy	Tempo	Era	BPM	Classification
Prime Time	3-5	3-5	1-4			(POP, ROCK, BAND, MALE) OR (FEMALE, INSTRUM)
Current	1-4	5	2-4			(POP, ROCK, BAND, MALE) OR (FEMALE, INSTRUM)
Prime Time	3-5	1-5	3-5			(POP, BAND, FEMALE) OR (POP, FEMALE, INSTRUM)
Golden Oldies	1-3	1-3	1-4			(ROCK, BAND, ETERNAL) OR (WORLD CULTURES, BAND, ETEF)

Rule	Found	Failed	Track Title	Performer	Duration
Category	18	250	(Intro) Continental Drift	The Rolling Stones	00:28
Classification	17	1	Start Me Up	The Rolling Stones	03:54
POP, ROCK, BAND, MALE	17	1	Sad Sad Sad	The Rolling Stones	03:32
POP	18	0	Miss You	The Rolling Stones	05:55
ROCK	17	1	Rock And A Hard Place	The Rolling Stones	04:51
BAND	18	0	Ruby Tuesday	The Rolling Stones	03:23
MALE	18	0	You Can't Always Get What Yo...	The Rolling Stones	07:26
FEMALE, INSTRUM	0	18	Factory Girl	The Rolling Stones	02:47
FEMALE	0	18			
INSTRUM	0	18			
Mood	8	9			
Energy	8	0			
Tempo	8	0			
Items Found	8				

JUTEL  
Excellence On Air Since 1984



# RadioMan Music Scheduler



## Features in brief:

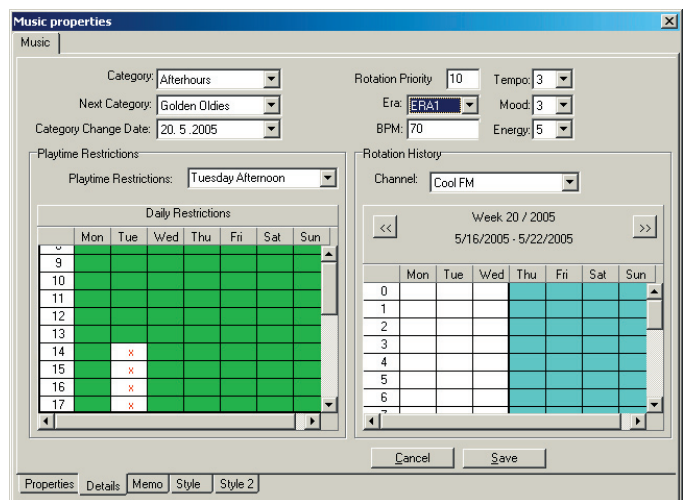
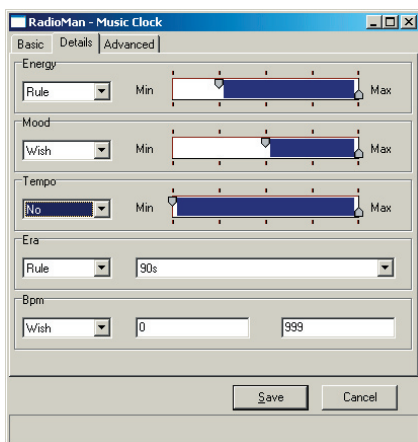
- Fully integrated with RadioMan
- Option for multichannel scheduling
- Centralized music selection
- Centralized music clock management; the same clock can be used in multiple programs
- Music selection rules based on
  - category
  - rotation
  - classification
  - time of day partition
- Alternative track suggestion if the automatically selected song is not appropriate for some reason
- Music selection category rule violation warning on manual insertion to playlist
- Category prioritization when selecting music
- Playtime restrictions based on time of day
- Artist groups for related artists to ensure that incompatible artists do not appear in the same selection set
- Track rotation history for scheduled and played songs
- Automatic category change for songs based on specified date
- Supports all music formats and large music archives
- Well suited also for Classical music

## Workstation requirements:

	Minimum	Recommended
CPU	Single core CPU	Dual-core CPU
RAM	1 GB	2 GB
Network adapter	100 Mbits Ethernet	100 Mbits or 1 Gbits Ethernet

## Software requirements:

	Recommended	Alternative
Operating system	Windows XP Professional	Windows 2003 Server
Database client	None for EE	IBM DB2 UDB v9.6 (required for WGE)



RadioMan is a registered trademark of Jutel.  
 IBM is a registered trademark of International Business Machines Corporation.  
 DB2 is a registered trademark of International Business Machines Corporation.  
 Windows 2000 and Windows XP are registered trademarks of Microsoft Corporation.  
 Other company, product and service names may be trademarks, or service marks of others.

