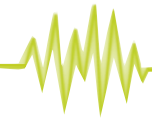


# RadioMan Quick Edit Pro

Capture

Manipulate

## Producing great radio faster and easier



JUTEL RadioMan™

### Unique highlights

- Fast to use, easy to learn
- Designed for journalists with journalists
- Expands with the task from one to 23 tracks
- Seamlessly integrated with RadioMan and production workflow
- Embedded ActiveX version for newsroom systems (ENPS, iNews, Transtel)
- Support for numerous audio formats with automatic conversions
- Edit while recording support

### Designed for radio journalists

Jutel Quick Edit Pro (QEP) is a high-performance digital multitrack audio editor designed for radio production where ease of use is the main priority. QEP is a unique tool for the journalist and professional broadcaster that makes it possible to produce better radio while being both easier and more efficient to use. This compact solution allow users to concentrate on the essentials and create great radio directly from the desktop, laptop, or wherever their jobs take them.

### Quality results

QEP has been made-to-measure for radio journalists, newscasters and other radio professionals who are under constant pressure to originate good stories to meet ever-tighter deadlines. It allows them to deliver quickly, yet without compromising quality. Its intuitive and journalist-orientated user interface offers maximum efficiency. Customisable shortcuts, additional controllers like a special keyboard and shuttle wheel, improve the usability.

With Quick Edit Pro, users can master the whole editing process at a glance. All the tools needed to produce high quality radio are available on screen, without complicated menus or multiple windows. Users learn quickly and get instant high quality results. For more sophisticated audio production, this tool can utilise DirectX plug-ins for effects and special processing. With QEP, projects can be professionally executed and shared within teams or across a station without studios full of expensive hardware.

No need for long training periods. With QEP you can get high quality results instantly.

### Fully integrated with other RadioMan modules

Jutel Quick Edit Pro is fully integrated into the world's leading newsroom systems, ENPS and iNews. Its drag-and-drop feature, built-in support for numerous audio formats, automatic conversion and import of commercials in different formats makes it truly versatile. Because QEP is highly integrated into the RadioMan system you can access the audio editor instantly from any other RadioMan software module. When using QEP on a mobile computer outside the station you can easily upload your files from any location through the Internet, including all information about the audio.

In the fast-paced news environment, QEP is capable of non-destructive edits of in-coming feeds even as they are being recorded. No more hassle with updating the system - because QEP is part of the RadioMan solution it will always work with latest RadioMan versions.

### The Best workflow

In order to achieve your main goal - to optimise the workflow of radio and content production, and to increase efficiency - it is necessary to optimise every part of the production chain. QEP saves time and money. Thanks to the excellent price-performance ratio, shorter training periods and efficient usage, you achieve a fast return on investment.

QEP is the No 1 choice of many of the world's leading broadcasting companies. The growing number of users worldwide proves it.



**JUTEL**  
Excellence On Air Since 1984



## RadioMan Quick Edit Pro



### File features:

- Supports raw MPEG and BWF (wav) file formats
- Supports MPEG Layer 1, MPEG Layer 2, PCM 8/16 bits audio formats
- Sampling rates 16000 Hz, 22050 Hz, 24000 Hz, 32000 Hz, 44100 Hz, 48000 Hz
- MPEG bit rates up to 384 Kbit/s (layer 2) or 448 Kbit/s (L1)
- MP3 import
- WMA import
- Save EDLs as multitrack projects or mix into one file
- Save into FTP host
- Save metadata to RadioMan database
- Autosave for projects
- Automatic audio format conversion for imported files
- Append the opened project to the end of the current project
- Drag-and-drop files from another RadioMan Application or from the Windows file manager
- Automatic removal of old temporary files
- RealAudio file export ( optional )
- See the Most-Recently-Used list for both audio and project files
- Autobackup and autorecover function

### Database features (when used with RadioMan):

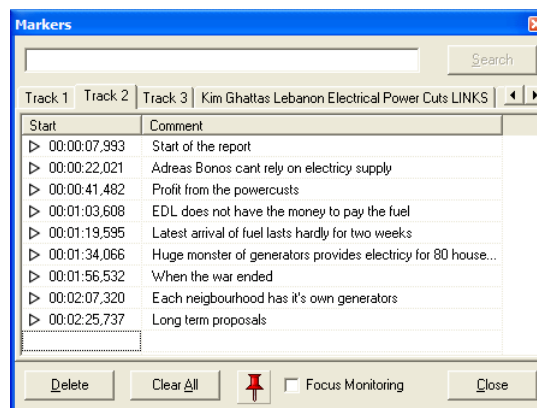
- Open/save file from/into the RadioMan database
- Open/save Project (EDL) from/into the RadioMan database
- Third-party database support

### Playback features:

- Play selected or all tracks
- Play single track (solo)
- Play selection
- Play over selection
- Play before/after selection
- Play start/end of selection
- Rewind to beginning, fast rewind, fast forward, forward to end
- Browse markers/clips during playback
- Pause, stop, loop, mute
- Scrub
- Analogue/digital volume control
- Output level meter (selectable, peak or VU)
- Selectable output channel and digital output format
- Prompt Display for playback position and status
- Selectable Output level meter
- Selectable output channel and digital output format
- Play from a marker (search a marker and play from the marker)

### Recording features:

- Record to selected track in insert/overwrite mode
- Punch in recording to the selected track
- Record multiple clips simultaneously to the clip list from selectable inputs
- Pause, stop
- Record voice-over using the selected clip
- Real-time display of recorded waveform
- Monitor recording
- Record from analogue/digital input
- Analogue/digital input level control
- Monitoring level control
- Input level meter
- Selectable input channel, monitoring channel and digital output format
- Selectable analogue input type (line input, microphone, CD-ROM)
- Display for recording position and status
- Set markers and searchable notes to the recording



Schedule

Capture

Manipulate

Broadcast

Control

Archive

## RadioMan Quick Edit Pro



### Editing features:

- Undo/redo up to 100 last editing commands
- Undo the latest deletion at the mouse position in the edit area
- Cut, copy, paste
- Delete
- Erase (replace with silence)
- Crop left/right/both
- Configure silence length when cropping
- Add silence into the beginning and end when cropping (default setting)
- Delete silence in selection (leading/trailing/both/between)
- Insert file
- Insert silence
- Snap, that is, set the editor to make space for a sound item to be inserted
- Apply fade-in/fade-out and set level for selection
- Define custom level curve with level curve points
- Drag-and-drop level curve editing
- Adjust level curve points with keyboard shortcuts or menu commands
- See waveform changes as level curve is edited
- See the clip name instead of the filename above the track in the edit area
- Easy to use Marker List
- Adjust general level, balance level and panoramic level of track
- Equalization (3 bands, MPEG audio only)
- Drag-and-drop blocks inside track
- Display selection duration and start/end times of selection
- Flexible commands for setting play cursor and selection start/end position
- Set play cursor position using drag-and-drop
- Set selection start/end using drag-and-drop
- Zoom in/out for more accurate editing
- Use the mouse wheel for scrolling and zooming
- Display of editor file duration and size in MB
- Automatic creation of file copies for editing (original files are not edited)

### Multitrack editing features:

- Set selected tracks in sync
- Cut and copy from multiple tracks
- Copy the selected channel from the current track to a new track
- Paste to multiple tracks
- Delete and erase from multiple tracks
- Delete silence from multiple tracks
- Create clip from selection/inverted selection (mix selected tracks)
- Drag-and-drop blocks between tracks
- Maximise/minimise track for more accurate editing
- Add/remove tracks
- Use up to 24 tracks (out of which one track is reserved for voice-over recordings)

### Clip list features:

- Open unlimited number of clips to the clip list
- Play clips, rapid play
- Record new clips
- Rename clips
- Insert/append a clip or multiple clips simultaneously to the editor
- Drop the selected clips to the selected tracks sequentially
- Import several audio files to the clip list at the same time
- Save clips with file format and audio format selection
- Save all/selected clips to a single audio file or to the database sequentially
- Preserve the clip list from the previous project
- Create new clips by copying from the editor
- Drag-and-drop clips to the editor (insert at play cursor, replace selection or replace all)
- Drop the selected clips to the selected tracks sequentially
- Drag-and-drop files from the Windows Explorer to the clip list
- Run DirectX plug-ins into clips
- Autohide the clip list

### Interface features:

- Small/large buttons
- Dockable toolbars
- Customise able toolbar positions, hide unnecessary toolbars
- Set status bar and clip list visible/invisible
- Customise able keyboard shortcuts
- Customise able visible menu commands
- Popup menus
- Support for special keyboards connected to USB port
- ShuttlePRO jog wheel support
- Play/record position view in scroll or page mode
- Remember user interface settings (window positions etc.)
- Allow/disallow multiple editor windows

### Maintenance functions:

- Set temporary files to automatic deletion when starting the application

Schedule

Capture

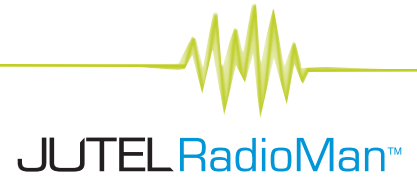
Manipulate

Broadcast

Control

Archive

## RadioMan Quick Edit Pro



### Workstation requirements:

	Minimum	Recommended
CPU	1 GHz CPU	2 GHz CPU or faster
RAM	1 GB for Windows XP, 2 GB for Windows 7	2 GB
HDD	150 GB	250 GB or more
Display adapter	17", 1024*768 or better	19", 1280*1024 or better
Network adapter	100 Mbits Ethernet	1Gbits Ethernet
Peripherals	2 * USB	2 * USB

### Special hardware:

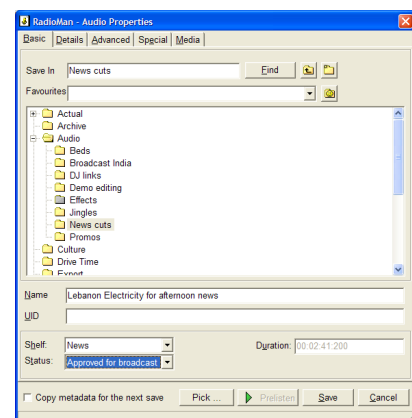
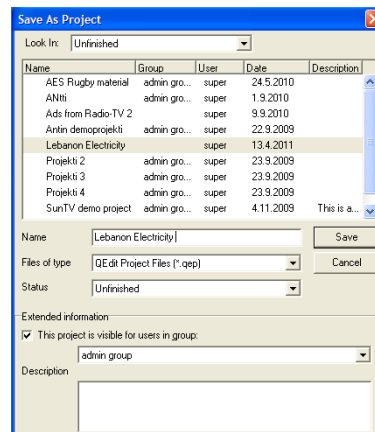
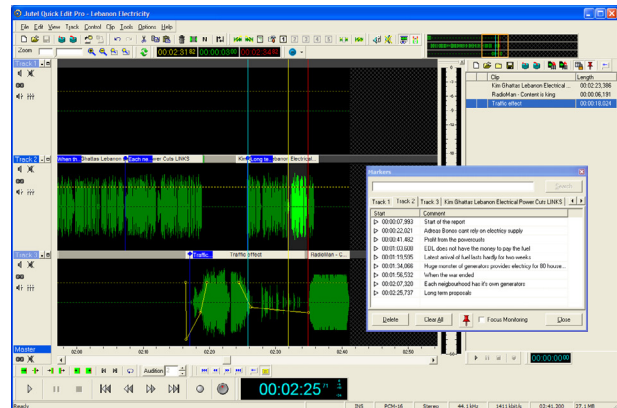
	Recommended	Alternative
Sound card	Digigram PCX924HR/e or UAX220-Mic	Internal sound card with VX Studio or other Digigram cards boards
Special controllers		ShuttlePro or RM Edit Keyboard

### Software requirements:

	Recommended	Alternative
Operating system	Windows 7 32-bit	Windows XP Professional 32-bit
Sound card driver	Digigram HR Runtime 1.72d	

### Related RadioMan software:

- RadioMan Production Suite (required for database access)



RadioMan is a registered trademark of Jutel.  
 IBM is a registered trademark of International Business Machines Corporation.  
 DB2 is a registered trademark of International Business Machines Corporation.  
 Red Hat Enterprise Linux server is a registered trademark of Red Hat Inc.  
 Windows 2003 server, Windows XP and Windows 7 are registered trademarks of Microsoft Corporation.  
 Other company, product and service names may be trademarks, or service marks of others.

